


DOUBLE ACTING PNEUMATIC ACTUATORS (DR)	DUBBELWERKENDE PNEUMATISCHE ACTUATORS (DR)
<b>SPECIFICATIONS:</b>	<b>SPECIFICATIES:</b>
mounting connections: according to ISO 5211 connections for accessories: NAMUR NBR O-ring seals rotation angle 90° torque: directly proportional to the air supply	montage aansluitingen: volgens ISO 5211 aansluitingen voor hulpstukken: NAMUR NBR O-ring afdichtingen rotatie hoek 90° draaimoment: direct proportioneel aan de luchtdruk
<b>WORKING CONDITIONS</b>	<b>WERK CONDITIES</b>
Double Acting with maximum 8 bar air operating media: dry filtered air or lubricated air with either non-detergent oil or lubricated air with NBR compatible oil. standard work temperature: abt. 0° C upto +50° C peak temperature: -20° C upto +80° C (dry air only)	Dubbelwerkend met maximum 8 bar bedieningsmedium: droge gefilterde lucht of gesmeerde lucht met "non detergent" olie of gesmeerde lucht met olie onschadelijk voor NBR standaard werkteemperatuur: ca. 0° C tot +50° C piek temperatuur: -20° C tot +80° C (alleen droge lucht)

model	DR Double-action Output Torque(Nm)								kg/pc	stock
	Air pressure									
	2,0 bar	3,0 bar	4,0 bar	5,0 bar	5,6	6,0 bar	7,0 bar	8,0 bar	kg/st	voorraad
AT040DR	4,0	6,0	8,0	10,1	11,1	12,1	14,1	16,1	0,7	•
AT052DR	8,5	12,7	17,0	21,2	23,4	25,5	29,7	34,0	1,2	•
AT063DR	19,0	22,4	29,9	37,4	41,1	44,9	52,4	59,9	1,9	•
AT075DR	24,7	37,1	49,5	61,9	68,0	74,2	86,6	99,0	2,8	•
AT083DR	32,5	48,7	64,9	81,2	89,3	97,4	113,6	129,9	3,2	•
AT092DR	46,5	69,8	93,1	116,3	128,0	139,6	162,9	180,1	4,6	•
AT105DR	69,3	163,9	138,5	173,2	190,5	207,8	242,5	277,1	6,1	•
AT125DR	122,7	184,1	245,4	308,8	337,5	368,0	429,5	480,9	9,5	•
AT140DR	184,7	277,1	369,5	461,8	508,0	554,2	646,5	763,9	13,7	•
AT160DR	281	422	563	704	774	844	985	1126	20,5	•
AT190DR	454	680	907	1134	1248	1361	1588	1819	31,1	o
AT210DR	923	935	1247	1559	1714	1870	2182	2494	41,8	o
AT240DR	977	1486	1954	2443	2687	2931	3420	3909	62,4	o
AT270DR	1374	2061	2748	3435	3379	4122	4809	5497	86,3	o
AT300DR	1696	2545	3393	4241	4665	5089	5938	6786	103	o
AT350DR	2540	3810	5080	6350	6985	7620	8890	10160	201	o
AT400DR	3619	5429	7238	9048	9953	10857	12667	14476	375	o

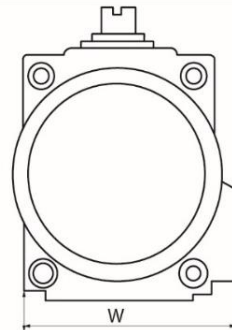
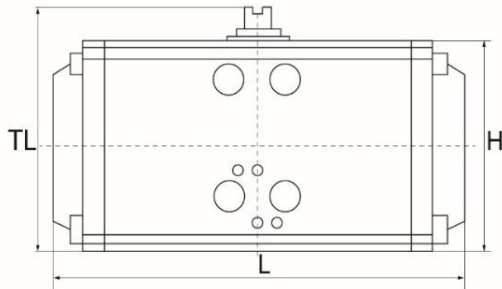
 <p>ZHITAI Actuator Selection</p>	• stock, s.u.	• voorraad, m.o.
	o ex mill	o af fabriek

When Actuator Selection, you should add a safe value to the defined valve torque, for example, a 25% safe value to steam or non-lubricating media; a 30% safe value to non-lubricating paste or liquid media; a 40% safe value to non-lubricating dry gas; a 60% safe value to non particle or powder media transmitted by gas; a 20% safe value to clean and low friction lubricating media.  
(the above are theoretical safe values recommended by our company Zhitai only for reference)

**Examples for selecting DR double-action actuators**

When controlling a ball valve, with torque of 200Nm, air supply pressure of 5 bar, medium of non-lubricating steam, considering safety factors, should add a 25% safe value that is equal to 250Nm; you can find the air supply pressure of 5 bar in the above output torque table, and search the equal or approximate torque data in the vertical line, and select 306,8 Nm and then search leftward the model in line and select AT125DR

(for more technical information and examples send an email to [info@md-europe.eu](mailto:info@md-europe.eu) and ask for the Zhitai pneumatic actuator catalog)



model	IS05211	Spindel	Length	Height	Height	Wide	Pneumatic
		S	L	H	TL	W	Connections
		mm	mm	mm	mm	mm	inch
<b>AT040DR</b>	F03-F05	9	116	60	80	61	1/8"
<b>AT052DR</b>	F03-F05	11	145	72	92	71	1/4"
<b>AT063DR</b>	F05-F07	14	169	88	108	82	1/4"
<b>AT075DR</b>	F05-F07	17	201	100	120	94	1/4"
<b>AT083DR</b>	F05-F07	17	209	108	128	101	1/4"
<b>AT092DR</b>	F05-F07	17	242	120	140	109	1/4"
<b>AT105DR</b>	F07-F10	22	275	133	153	122	1/4"
<b>AT125DR</b>	F07-F10	22	332	155	175	138	1/4"
<b>AT140DR</b>	F10-F12	27	385	172	192	153	1/4"
<b>AT160DR</b>	F10-F12	27	450	197	217	174	1/4"
<b>AT190DR</b>	F14	36	507	230	260	206	1/4"
<b>AT210DR</b>	F14	36	532	255	285	226	1/4"
<b>AT240DR</b>	F16	46	646	290	320	258	3/8"
<b>AT270DR</b>	F16	46	722	320	350	292	3/8"
<b>AT300DR</b>	F16	46	825	354	384	335	1/2"
<b>AT350DR</b>	F16-F25	55	866	410	460	385	1/2"
<b>AT400DR</b>	F16-F25	55	935	467	517	520	1/2"