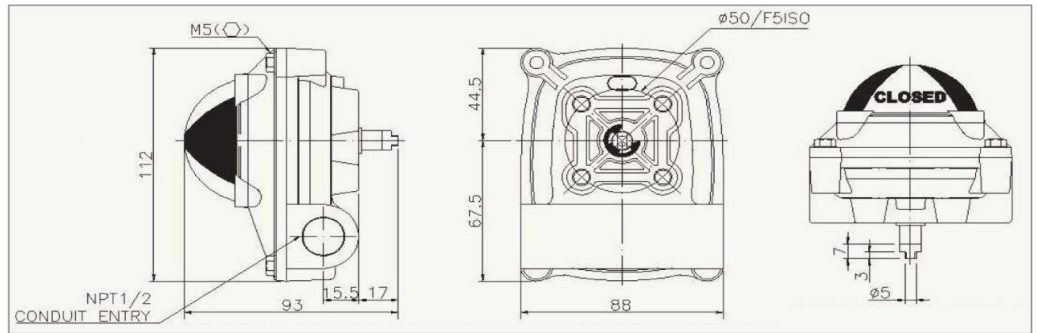




www.md-europe.eu

SWITCH BOX APL-2N



FEATURES

Solid and compact design:

- aluminium die-casting housing and powder coating

Bolts on visual position indicator

Quick set cam:

- spring loaded splined cam
- no need to adjust after initial setting
- easy setting without tool

Dual cable entries

Captive cover bolt:

- no worry to loose bolts while cover open

Easy mounting bracket :

- NAMUR standard shaft and bracket

STANDARD SWITCHES

2SPDT switches

Contact arrangement:

- 250VAC/16A; 250VDC/0.3A
- 125VDC/0.6A, 30VDC/10A

Operating frequency:

- 600 operating per minute max (mechanical)
- 60 operating per minute max (electrical)

POSITION MONITOR

Continuous visual position indicator
 Made of high impact, heat, chemical resistance and transparent protection
 High visibility and reliability

STANDARD SPECIFICATIONS

Enclosure	Weatherproof IP 67/NEMA4&4X
Cable entries	Two NPT 1/2"
Ambient temperature	Ambiant temperature -20° C -> + 80° C
Terminal strips	8 points (0.08-2.5 mm ²)
Position indicator	0 - 90° (90° turn free join) ; close red; open yellow
Switches	Mechanical switch x2; proximity sensor x2
Painting	Chromate Polyester powder coating (black)

Materials

Housing cover & body	Aluminium die casting	O-ring	NBR
Shaft	Stainless steel	Bushing	Bronze
Indicator cover	Polycarbonate	E-ring(shaft)	Stainless steel
Cam	Polycarbonate	Earth lug	Stainless steel
Spring	Stainless steel	Indicator	ABS/Polycarbonate
Housing cover bold	Stainless steel	Bracket	Stainless steel

FROM STOCK SUBJECT UNSOLD

Made by



志泰科技集团
Zhitai Technology Group

for

MD MD Europe BV